



SUPERMARKET & CONVENIENCE MERCHANDISING GUIDE

SHOP FITTINGS | CUSTOM DISPLAY | POINT OF SALE | SIGNAGE | SHELVING

SINCE 1974

***si*retail[®]**
SOLUTIONS IN RETAIL

ABOUT US

At SI Retail our focus is to provide you with a range of shopfitting solutions suited to your exact needs. We study your brand and work with you to deliver effective methods of displaying your stock, advertising promotional products or just simply help you stand out from the crowd. With extensive industry knowledge, our professional team will work with you to scope out all the details in order to deliver the most effective solutions relative to your needs. Whether it be merchandising, displays, point of sale or custom design, we will find the perfect solution for your brand!

SI Retail is committed to giving our customers the best opportunities and the most holistic service possible. Although this family owned business has been operating in Australia since 1974, we established our own office in China in 2006 to focus on sourcing, manufacturing and shipping. This ensures the supply chain is fully controlled – from the start of your project through to its completion.

In China, we have a bilingual team of designers, quality controllers, project coordinators, product buyers and logistics supervisors. The right blend of Australian and Chinese management gives us the unique ability to completely understand your requirements and correctly convey that throughout the manufacturing and shipping processes.

Wholly owned by SI Retail Pty. Ltd., this business is registered as a Full Trading Company in China and is licensed to import into and export from China. This means that our network includes factories that supply domestically as well as those that are export-approved; all complimentary to our large Australian warehouse which enables immediate deliveries direct to your stores.

OUR DIFFERENCE

We believe true customer service means fully understanding your organisational needs, so that we can focus on delivering optimal shopfitting solutions and you can concentrate on your core business.

Australian Owned & Operated Since 1974

Unrivalled Customer Service

Expert Product Knowledge

Quality Products at Affordable Prices

Solution Based Approach

Personalised Project Management

Specialist Manufacturing Capabilities

Visible Presence in China

OUR CORE STRENGTHS

Wide Range of Shopfittings & Displays

Large Australian Warehouse

Creative Custom-Made Products

Store Environment Optimisation

Merchandising Solutions



CONTENTS

DATA STRIPPING	1-3
DATA STRIP ACCESSORIES	4
DISPLAY HOOKS	5-10
Pegboard & Volcano Board	5-6
Flat Metalboard	7
Slatwall	8
Grid Mesh	9-10
HOOK ACCESSORIES	11-12
SIGNAGE/POINT OF SALE	13-18
Dump Bins & Sign Grips	14
Ticket Frames & Sign Holders	15
Stands, Acrylics & Other Point of Sale	16-17
Shopping Baskets & Trolleys	18
VERSA GONDOLAS	19
GONDOLA ACCESSORIES	20
L.E.D SHELF LIGHTING	21-22
Stacked L.E.D Kits	21
Horizontal L.E.D Daisy-Chain Kits	22
SHELF MANAGEMENT	23-24
GRAVITY ROLLER SHELVES	25-26
PALLET GUARD	27-28

DATA STRIPPING

SI Retail offers unparalleled quality data strips. We stock a wide variety of profiles, sizes and styles including self-adhesive and clip-on versions, with a selection of colours, heights, widths and lengths available.

The clear front panels protect your labels and are completely transparent to allow for accurate scanning of barcodes and maximum visibility to customers.

Efficient manufacturing techniques, high quality materials and superior Avery Dennison tape ensures our data strips are made to last and always present well.

The popular Avery Dennison tape boasts features such as:

- » Resistance to heat, UV and humidity
- » Stain resistance and elimination of yellowing or other colour changes
- » Clear adhesive means an invisible assembly every time!



Our patent pending talker grip profile is the best design on the market today. The handy finger grip ridge allows for talkers or tickets to be easily inserted and removed, whilst the special flexible grip teeth ensure they don't fall out or rip when being pulled out.



Key Features of the Talker Grip

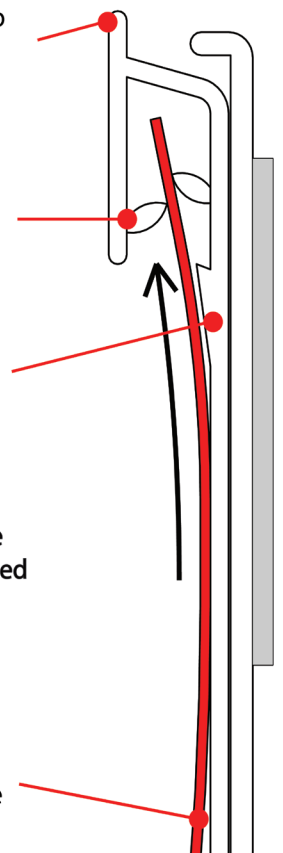
Finger tip control of the top lip allows for easy insertion of pricing ticket

The teeth allow the paper to enter, but then it holds onto the paper when pulled down

The ramp guides the paper through the flexible teeth

This talker grip feature will also be incorporated into other data strip configurations

Once the paper is inserted, it would require reasonable force for it to be manually pulled back out



AU Patent Application No. 2017902415
AU Design Application No. 201713779 & 201713780

FLAT DATA STRIP

DS-S

Flat data strip is the most economical and easiest way to price your products on shelves. These data strips contain Avery adhesive tape which attaches to the front lip of your shelving for a neat presentation.

☐ Clear
 ☐ Red
 ☐ Blue
 ☐ Black
 ☐ Grey

Pack Qty	50
Heights* (mm)	26, 30, 39
Lengths* (mm)	914, 1000, 1200



FLAT DATA STRIP WITH TALKER GRIP

DS-STG

Featuring a brand new design, SI Retail's flat data strip with talker grip is perfect for promoting specials or clearances. This design eliminates the need for any clips which can be messy when moved out of place. Avery adhesive is included for an easy application onto your shelves.

☐ Clear
 ☐ White
 ☐ Red
 ☐ Blue
 ☐ Black
 ☐ Grey

Pack Qty	50
Height* (mm)	26
Lengths* (mm)	914, 1000, 1200



AU Patent Application No. 2017902415
 AU Design Application No. 201713779 & 201713780

FOAM TAPE DATA STRIP WITH TALKER GRIP

DS-STG26BK-F

This style of data strip includes Avery adhesive foam tape for an easy application onto your shelves. It is suitable for use in refrigeration units if applied at room temperature onto a clean surface. For best results, please see instruction guide for recommended installation process.

☐ Black

Pack Qty	25
Height* (mm)	26
Lengths* (mm)	914, 1220



AU Patent Application No. 2017902415
 AU Design Application No. 201713779 & 201713780

ANGLED DATA STRIP WITH TALKER GRIP

DS-VTG

Angled data strip is also available with SI Retail's exclusive talker grip profile. It is perfect for lower shelves, as it allows for easy readability with the labels slightly angled up (35 degrees). This style includes Avery adhesive for a fast application onto your shelves.

☐ Clear
 ☐ Black
 ☐ Grey

Pack Qty	50
Heights* (mm)	26
Lengths* (mm)	914, 1200



AU Patent Application No. 2017902415
 AU Design Application No. 201713781

*Heights and lengths aren't always available in every colour combination. Please contact us to confirm options.

TOP TAPE ANGLED DATA STRIP

DS-H

Top tape data strips are perfect for glass shelving and are slightly angled for greater visibility. They contain Avery adhesive tape which attaches onto the top of a shelf for a seamless presentation.

☐ Clear ☐ White ☐ Black

Pack Qty	50
Heights* (mm)	26, 30, 39
Lengths* (mm)	900, 914, 1200



HANGING DATA STRIP

DS-C

Hanging data strips are designed to display labels on baskets and wire shelving. These come complete with clips to hook onto the shelf.

☐ Clear ☐ Black

Pack Qty	100
Heights* (mm)	26, 39, 55
Lengths* (mm)	105, 914, 1200



DOUBLE DATA STRIP ADAPTER

DS-HGA

Data strip adapters adhere to the back of existing data strips to attach a secondary data strip. This allows for the attachment of different heights and colours of data strip and provides an additional layer for promotions or a larger area to promote product information/ branding. Avery adhesive included on the adapter, ensures a strong bond between the adapter and data strips.

☐ Clear

Pack Qty	10, 50
Lengths* (mm)	914, 1200



BULLNOSE DATA STRIP

DS-BN

Bullnose data strips are designed to display branding or to create separate categories within your store. It sits on top of shelves for instant visibility. This style includes Avery adhesive foam tape for an easy application onto your shelves. Available for custom orders only.

☐ Clear

Pack Qty	25
Height* (mm)	30
Lengths* (mm)	914, 1200



*Heights and lengths aren't always available in every colour combination. Please contact us to confirm options.

DATA STRIP ACCESSORIES

Shelf merchandising is an important aspect for maintaining a well-organised store environment. Help customers identify pricing and product information through a display system which promotes professionalism.

Whatever your needs are, SI Retail stocks a variety of durable data strip accessories. There is a wide range of options including colours, sizes and different configurations to suit your brand and preference.



SHELF TALKER CLIP

An economical and simple shelf talker clip which clips into the front window of flat data strip for adding promotional tickets/talkers. It holds tickets against the shelf and is best used when not utilising talker grip data strip.

☐ Clear

Pack Qty	25
Size (mm)	25 L x 15 H

DSA-C25



PVC PLASTIC TALKER/TICKET POCKET

The clear protective PVC helps keep promotional talkers/tickets from ripping. Simply place your promotional ticket into the pocket then insert the top flap into any standard flat data strip. Great solution to protect tickets from becoming wet whilst in refrigerated conditions.

☐ Clear

Pack Qty	10
Artwork	A7 Talkers/Tickets
Insert Size (mm)	(74 W x 105 H)

DSA-PVC-A7



DISPLAY HOOKS

Hangsell products are best displayed on hooks! Whether you have a Volcano board, Pegboard, Slatwall or Grid Mesh Panel, SI Retail has the hooks to suit.

SI Retail's flip scan display hooks are designed so that the label remains level irrespective of the load on the hook, meaning all of your labels will align neatly no matter what you are displaying. With a large array of sizes and wire diameters, there are hooks to suit every application.



PEGBOARD/VOLCANO BOARD

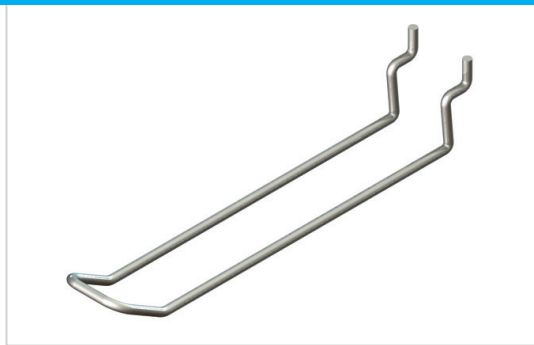
LOOP HOOK

Gain stability when displaying heavy products with the use of loop hooks. They suit Volcano Board, Pegboard and Slatwall and are available in a wide variety of lengths.

☐ Chrome Hook

Pack Qty	25
Lengths (mm)	75, 100, 150, 225
Wire Diameter (mm)	4

DHP-L4CH



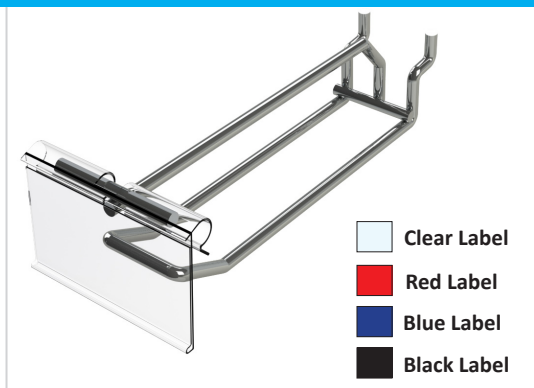
FLIP SCAN LOOP HOOK

Chrome flip scan loop display hooks provide an area to attach a label holder (sold separately). They suit Volcano Board, Pegboard and Slatwall and are available in a variety of different lengths. They help to hang unbalanced packaging evenly. Label holders are available in many different colours and with or without a talker grip.

☐ Chrome Hook

Pack Qty	25
Lengths (mm)	100, 150, 225
Wire Diameter (mm)	4

DHP-FL4CH



- ☐ Clear Label
- ☐ Red Label
- ☐ Blue Label
- ☐ Black Label

SINGLE PRONG

DHP-S

Pegboard single prong hooks suit Volcano Board and Slatwall too! They are available in a wide variety of lengths and wire diameters. These simple hooks keep your hangsell products looking neat and tidy.

☐ Chrome Hook

Pack Qty	25	
Lengths (mm)	50, 75, 100	150, 225, 300
Wire Diameters (mm)	4	5



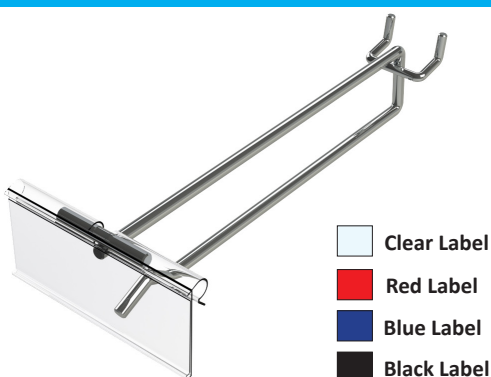
FLIP SCAN

DHP-F

Chrome flip scan display hooks provide an area to attach a label holder (sold separately). They suit Volcano Board, Pegboard and Slatwall panels. Choose from a variety of lengths and two different wire diameters. Label holders to suit, are available in many different colours, sizes and with or without a talker grip.

☐ Chrome Hook

Pack Qty	25	
Lengths (mm)	75, 100, 150, 225	300
Wire Diameters (mm)	5	6



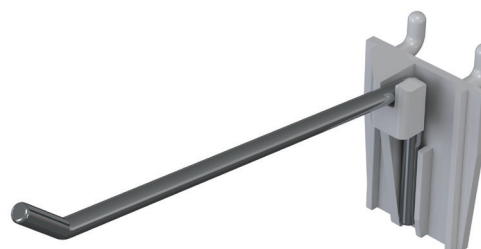
SINGLE PRONG FASTBACK

DHPF-S5CH

Perfect for tight spaces such as under shelves, fastback display hooks attach to a fastback adapter. This combination is designed to save time by helping you move hooks on display without removing the whole hook. One fastback hook stem will fit all adapters. The SKU above includes the hook and fastback Pegboard adapter.

☐ Chrome Hook

Pack Qty	25
Lengths (mm)	150, 225, 300
Wire Diameter (mm)	5.5



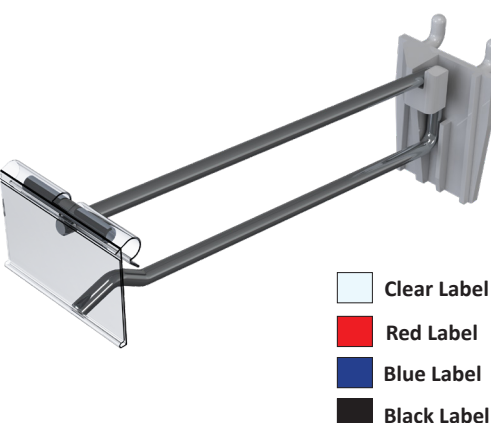
FLIP SCAN FASTBACK

DHPF-F5CH

Flip scan fastback display hooks provide an area to attach a label holder (sold separately). These hooks are universally designed to clip into different adapters as required. The SKU above includes the hook and fastback Pegboard adapter. This allow stores to move hooks without having to remove merchandise around the hook. Adapters are individually shaped to suit different panels. Label holders are available in many different colours and with or without a talker grip.

☐ Chrome Hook

Pack Qty	25
Lengths (mm)	150, 225, 300
Wire Diameter (mm)	5.5



FLAT METALBOARD

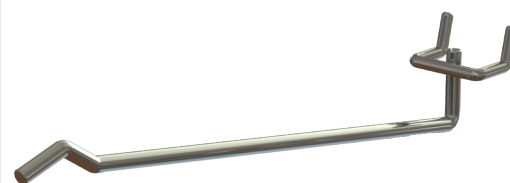
SINGLE PRONG

DHM-D

These single prong hooks are designed specifically for flat Metalboard applications. Select from a variety of lengths to suit your merchandise.

☐ Chrome Hook

Pack Qty	25
Lengths (mm)	100, 150, 225
Wire Diameter (mm)	5



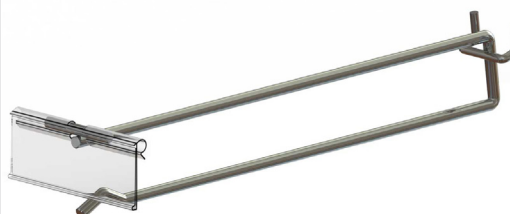
FLIP SCAN

DHM-F

Metalboard flip scan hooks are designed specifically for perforated flat metal panels. They include an area to attach a label holder (sold separately). Label holders are available in many different colours, sizes and with or without a talker grip.

☐ Chrome Hook

Pack Qty	25		
Lengths (mm)	100	150, 225	300
Wire Diameters (mm)	5	5 & 6	6



- ☐ Clear Label
- ☐ Red Label
- ☐ Blue Label
- ☐ Black Label

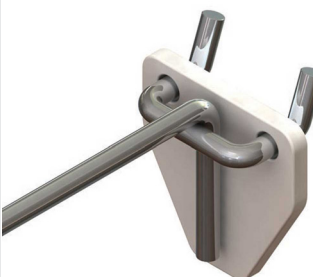
PEGBOARD TO METALBOARD ADAPTER

DHA-MA

A simple adapter which allows a Pegboard hook to fit into a flat perforated Metalboard panel. The adapter attaches to the back of any Pegboard/Volcano board hook.

☐ Light Grey

Pack Qty	25
Size (mm)	37 W x 35 H x 3 D



SLATWALL

SINGLE PRONG - PLATE STYLE

DH-SS-H

These single prong hooks are designed specifically for Slatwall applications. Select from a variety of lengths to suit your merchandise.

☐ Chrome Hook

Pack Qty	25
Lengths (mm)	50, 100, 150, 200, 250, 300
Wire Diameters (mm)	5.3



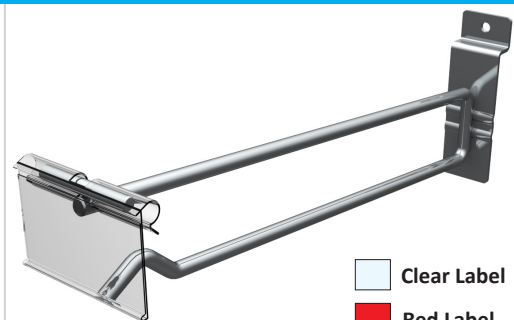
FLIP SCAN - PLATE STYLE

DH-SF-H

These flip scan hooks are designed specifically for Slatwall. They are available in a wide variety of lengths and designed with an area to attach a label holder (sold separately). Label holders are available in many different colours and with or without a talker grip.

☐ Chrome Hook

Pack Qty	25	
Lengths (mm)	100, 150	200
Wire Diameters (mm)	5.3	6



- ☐ Clear Label
- ☐ Red Label
- ☐ Blue Label
- ☐ Black Label

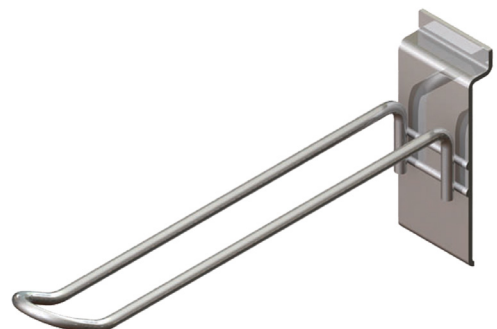
LOOP HOOK - PLATE STYLE

DH-SL-H

These loop hooks are designed specifically for Slatwall. Loop hooks help to hang unbalanced packaging evenly, while the large back plate aids in supporting heavier products.

☐ Chrome Hook

Pack Qty	25
Lengths (mm)	100, 150, 200
Wire Diameters (mm)	5.5



GRID MESH

SINGLE PRONG

DHG25-S

Single prong Grid Mesh hooks are designed to fit 25-50mm mesh. Select from either a 150mm or 225mm hook to suit your merchandise and display requirements.

☐ Chrome Hook

Pack Qty	25	
Lengths (mm)	150	225
Wire Diameters (mm)	4	5.5



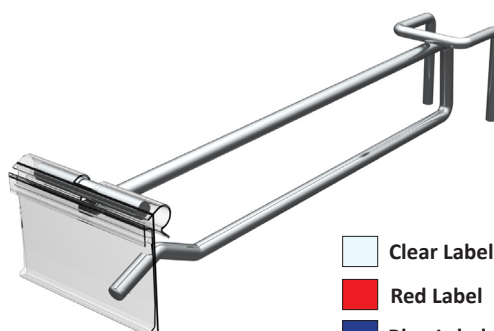
FLIP SCAN

DHG25-F

The flip scan grid mesh hooks provide an area to attach a label holder (sold separately). These hooks suit 25-50mm Grid Mesh and are available in a variety of lengths. Label holders are available in many different colours and with or without a talker grip.

☐ Chrome Hook

Pack Qty	25	
Lengths (mm)	150	225, 300
Wire Diameters (mm)	5	5.5 & 6



☐ Clear Label
☐ Red Label
☐ Blue Label
☐ Black Label

SINGLE PRONG - PLATE STYLE

DHG75-S

These single prong hooks are designed specifically to fit 50 to 75mm Grid Mesh. Select from a variety of lengths to suit your merchandise.

☐ Chrome Hook

Pack Qty	25	
Lengths (mm)	225, 300	
Wire Diameter (mm)	5.3	



SINGLE PRONG FASTBACK

DHGF-S5CH

Perfect for tight spaces such as under shelves, fastback display hooks attach to a fastback adapter. This combination is designed to save time by helping you move hooks on display without removing the whole hook. One fastback hook stem will fit all adapters. The SKU above includes the hook and fastback Grid Mesh adapter.

☐ Chrome Hook

Pack Qty	25
Lengths (mm)	150, 225, 300
Wire Diameter (mm)	5.5



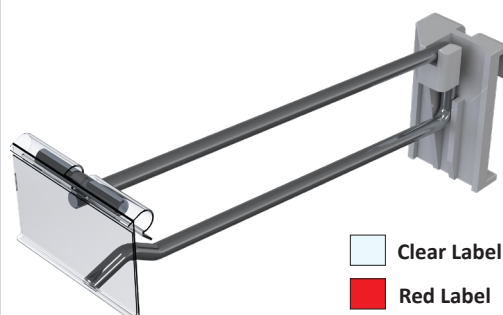
FLIP SCAN FASTBACK

DHGF-F5CH

Chrome flip scan fastback display hooks provide an area to attach a label holder (sold separately). These hooks are universally designed to clip into different adapters as required. Adapters are individually shaped to suit certain panels. The SKU above includes the hook and fastback Grid Mesh adapter. Label holders are available in many different colours and with or without a talker grip.

☐ Chrome Hook

Pack Qty	25
Lengths (mm)	150, 225, 300
Wire Diameter (mm)	5.5



☐ Clear Label
☐ Red Label
☐ Blue Label
☐ Black Label

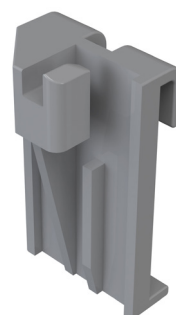
REPLACEMENT GRID FASTBACK ADAPTER

DHA-FB-GRID

The Grid fastback adapter is made from heavy duty ABS and individually shaped to fit onto Grid Mesh. Simply connect a single prong or flip scan fastback hook and attach onto your Grid Mesh gondola. These adapters are sold as replacement pieces in the event of loss or damage to those purchased with the hook stem.

☐ Grey Adapter

Pack Qty	25
Size (mm)	35 W x 62 H x 25 D



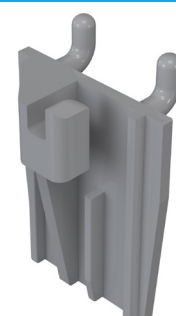
REPLACEMENT PEG FASTBACK ADAPTER

DHA-FB-PEG

The Peg fastback adapter is made from heavy duty ABS and individually shaped to fit into Pegboard/Volcano Board panels. Simply connect a single prong or flip scan fastback hook and they are ready to attach. These adapters are sold as replacement pieces in the event of loss or damage to those purchased with the hook stem.

☐ Grey Adapter

Pack Qty	25
Size (mm)	45 W x 65 H x 30 D



HOOK ACCESSORIES

Complimenting SI Retail's large range of display hooks, are a variety of accessories to suit; including labels, security accessories and inventory control. Everything you need is available to ensure your products are presented in the most effective way possible.



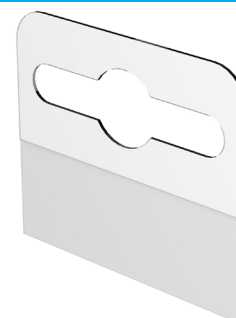
HANG TABS

Repair broken packaging with hang tabs or add them to merchandise without pre-punched holes. Hang tabs are designed specifically for loop hooks and single hooks. They affix to most materials for hanging product onto hooks. Sold per sheet, one sheet contains 20-24 hang tabs (depending on style of hang tabs).

☐ Clear

Pack Qty	1
Size (mm)	35 W x 40 H

DHA-HT



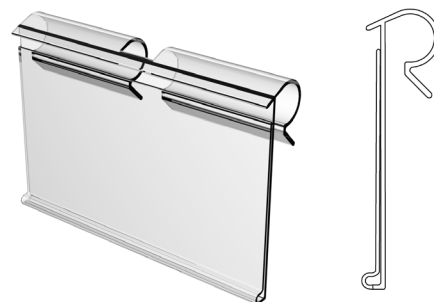
FLIP SCAN LABEL HOLDER

DS-F

Label holders attach to the flip scan hooks to present product information for items hanging on the hook. They can be moved out of the way by flipping it upwards when re-stocking products on the hook.

☐ Clear ☐ Red ☐ Blue ☐ Black

Pack Qty	25
Heights* (mm)	26, 30, 39
Lengths* (mm)	50, 55, 65, 75, 80



FLIP SCAN LABEL HOLDER WITH TALKER GRIP

DS-FTG

The addition of a talker grip as part of the label holder allows for promotional talkers, pricing or other promotions to be added to the label.

☐ Clear ☐ Black

Pack Qty	25
Heights* (mm)	26
Lengths* (mm)	50, 80



AU Patent Application No. 2017902415
AU Design Application No. 201713782

STOP LOCKS

DHA-STOP-LOK

Secure merchandise on your hooks and prevent theft with SI Retail's stop lock range. Make sure to purchase a magnetic key to open the stop locks (available separately).

☐ Red ☐ Black

Pack Qty	10
Single Prong Suits (mm)	4 or 6 Diameter Single Prong Hooks
Double Prong Suits (mm)	6 Diameter Flip Scan Hooks



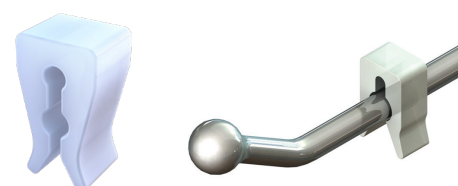
INVENTORY CONTROL CLIPS

DHA-ICLIP

Inventory control clips are designed to keep your products at the front of your display hooks for a neat product presentation.

☐ White

Pack Qty	100
One Size Suits (mm)	3.8 to 6.5 Diameter Hooks



SIGNAGE / POINT OF SALE

SI Retail provides a complete range of pre-printed signage and point of sale display systems to suit FMCG retail outlets. From external sign boards, window signage, internal snap frames, hanging banners and shopping baskets to talker ticketing, sales banners, and general visual merchandising signage; the possibilities are endless.

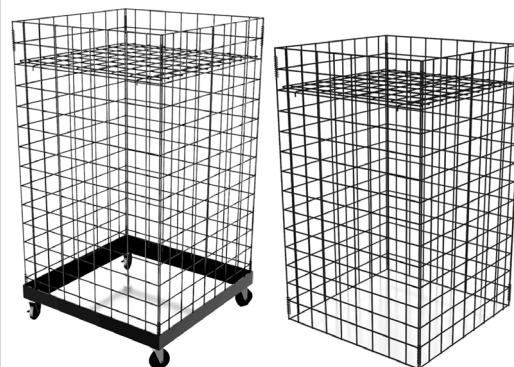


DUMP BINS

A great way to display your popular stock, clearance lines or promotional products. Includes a height adjustable shelf. Available with or without the base which includes lockable castor wheels. The dump bins are foldable for easy transportation and storage.

☒ Black ☐ White

Pack Qty	1
Sizes With Base (mm)	460 x 460 x 820 H 620 x 620 x 970 H
Sizes Without Base (mm)	460 x 460 x 750 H 620 x 620 x 900 H



BB-DBS

DUMP BIN ACRYLIC SIGN HOLDER

Use these acrylic sign holders to display information such as pricing or promotions on dump bins. Available in A3 for a large impact or A4 for smaller signage.

☐ Clear

Pack Qty	1
Sizes Available	A3, A4
Orientations Available	Portrait, Landscape



SH-DB-L

DUMP BIN TICKET FRAME SIGN HOLDER

Use these flexible sign holders to display information such as pricing or promotions at eye level. Fits a range of dump bins and other mesh products. The pole adjusts an extra 200mm for the perfect height.

☒ Black ☒ Red ☒ Blue

Pack Qty	1
Sizes Available	A3, A4, A5
Orientations Available	Portrait/Landscape Ticket Frame



SH-DBG-ADJ-T

T-GRIP SIGN HOLDERS

A range of T-grips are available to suit all requirements. SI Retail stock wide and heavy duty T-grips for large corflute/aisle signage, hinged T-grips for flexibility and slim T-grips for posters. T-grips can attach to any surface with its strong and durable Avery adhesive.

☐ Clear

Pack Qty	25
Lengths (mm)	25, 75
Styles Available	Wide, Heavy Duty, Hinged, Slim



SH-STGV

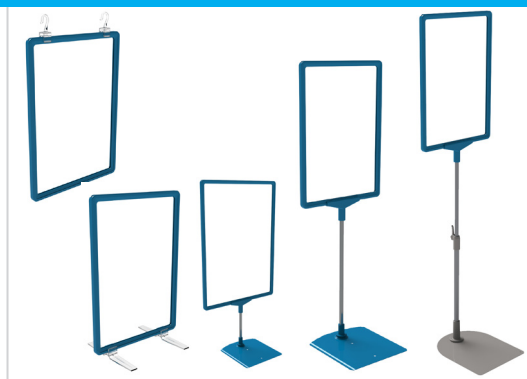
TICKET FRAME KITS

TF

Use ticket frames to display information such as pricing or promotions around the store. Available in many different styles and sizes, choose a combination to suit your style.

 Black  Red  Blue

Pack Qty	1
Sizes Available	A3, A4, A5 Frames
Styles Available (mm)	Hanging, Stand Alone Feet, 1200 High, Fixed 150 or 300, Telescopic (300-600)



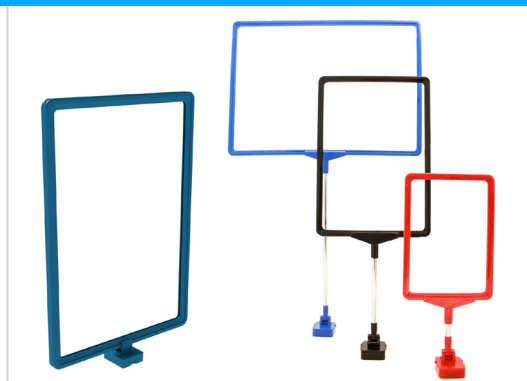
MAGNETIC TICKET FRAME KITS

TF-MAG-T

Use ticket frames to display information such as pricing or promotions around the store. Available in many different styles and sizes, the magnetic attachment can be purchased with or without a stem.

 Black  Red  Blue

Pack Qty	1
Sizes Available	A3, A4, A5
Heights (mm)	50, 150 or 300 With Stem Also Available Without Stem



MAGNETIC AISLE SIGN HOLDER (L-SHAPE)

SH-AISH-MAGL-WH-T

The L-Shape magnetic sign holder includes a magnetic base and a plastic strip to hold and protect your poster. It can be used for many applications and holds posters vertically or horizontally. This sign holder supports corflute or thick cardboard materials by holding the corners. Purchase two pieces to hold large items upright.

☐ White

Pack Qty	1
One Size Suits (mm)	Poster/Corflute 1 - 3mm Thick



MAGNETIC AISLE SIGN HOLDER (420MM ARM)

SH-AISH-MAG420

Includes 2 adjustable hooks to hold a variety of signage sizes. Simply punch holes into your poster and slide the hooks along the arm to adjust to the width of your poster. Hooks will accommodate signage up to 3mm thick. The arm moves a full 180 degrees and locks into position so that the magnetic base can be set vertically or horizontally to fit a wide range of displays and shelving.

☐ White

Pack Qty	10
One Size Suits (mm)	Poster/Corflute up to 420 Long



CATALOGUE STANDS

Catalogue stands are a stylish way to display catalogues, leaflets or pamphlets. Acrylic catalogue stands include a sign holder which accommodates A4 portrait sized signage that can easily be changed as required. A3 portrait acrylic catalogue stands are also available. Wire catalogue stands are available in black or white and include an A4 basket with an A4 acrylic sign holder.

☒ **Black (Acrylic or Wire)** ☐ **Chrome (Acrylic)** ☐ **White (Wire)**

Pack Qty	1
Acrylic Stand Size (mm)	295 Base Diameter x 900 Pole Height
Wire Stand Size (mm)	355 Base Diameter x 720 Pole Height

FD-CATST



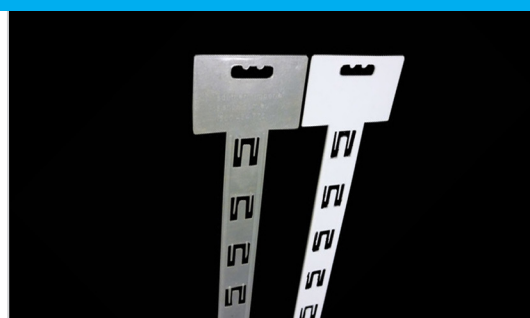
MOULDED HANGSELL CLIP STRIP

An economical clip strip which can be used anywhere to hang your merchandise. It holds up to 12 items and includes a label holder at the top. Small teeth help keep products in their place.

☐ **Clear** ☐ **White**

Pack Qty	10
Size (mm)	33 W x 590 L

CS-PML12



SNAP FRAMES

Snap frames are a simple yet cost-effective way to professionally display your promotions or events in-store and can be placed in portrait or landscape positions. Once fixed to your wall, artwork can be easily changed by simply snapping open the frames edges. Clear perspex (included) helps protect artwork. Snap frames are available in square or rounded edge options.

☐ **Silver**

Pack Qty	1
Sizes Available	A0 (Round), A1, A2, A3 (Square), A4
Styles Available	Square Edges or Rounded Edges

PF-SL



A-FRAME

A-Frames are the most popular way to advertise to passing foot traffic. This self-standing sign is the perfect solution for grabbing the attention of passers-by. Artwork can be easily changed by simply snapping open the frames edges. The A-Frame folds up for easy moving, while clear perspex covers protect artwork. Suits A1 portrait artwork (594mm W x 840mm H).

☐ **Silver**

Pack Qty	1
Artwork Insert Size (mm)	A1 (594 W x 1108 H)

PF-SLLPB204



FREESTANDING COUNTER ACRYLICS

Ideal for counter and glass displays, acrylics are an economical way to display your promotions. Available in a variety of sizes and styles, the 2mm thick acrylic will not break easily and can be re-used for years. It also ensures your artwork is protected for a very long time.

☐ Clear

Pack Qty	5
Sizes Available	A3, A4, A5, A6, A7
Orientations Available	Landscape, Portrait
Styles Available	Single, Double Sided

SH-ADS



POSTER GRIPS & CEILING HANGERS

Hang posters easily from ceilings with plastic or aluminium poster grips and wire ceiling hangers. Adjustable ceiling hangers (210mm-1600mm) allow you to specify hanging heights while fixed length ceiling hangers allow for easier installation to ensure all of your posters hang at the same height.

☐ Silver (Aluminium) ☐ Clear (Plastic) ☐ Black (Plastic)

Pack Qty	1 Each (Sold Separately)
Poster Grip Lengths (mm)	500, 610, 850, 1220 (Aluminium) 610, 850, 1220 (Plastic)
Ceiling Hanger Sizes (mm)	100, 150, 200, 300, 400, 600, 900 (Adjustable is 210-1600mm)

HD-PH



SHOPPING BAG DISPENSER

Ideal for grocery and convenience stores, the shopping bag dispenser has a solid design, with a sturdy base, handles and bag tab. It can be screwed into the counter or hung from hooks.

☐ Chrome

Pack Qty	1
Size (mm)	310 W X 350 H

BB-SBD



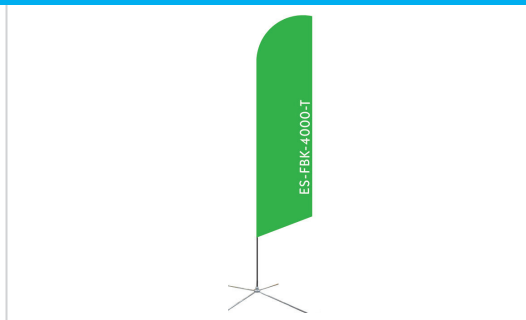
DOUBLE SIDED FEATHER FLYBANNER

An eye-catching outdoor banner ideal for flagging passing traffic and drawing attention to your store. The kit includes a custom printed flybanner, a surface base, a spike base and carry bag.

☐ Custom

Pack Qty	1
Size (mm)	900 W x 3000 H (Flag only), With Base 4000mm High

ES-FBPK-DS-T



SHOPPING BASKETS

BB-BAL

Shopping baskets provide convenience for your customer and are a cost-effective way to encourage additional purchases! Keep your customers shopping longer by positioning these baskets near the entryway.

☐ Black
 ☐ Red
 ☐ Blue (28L Only)

Pack Qty	10, 20 (With or Without Stand)
Small Size 21L (mm)	290 W x 425 L x 225 H
Large Size 28L (mm)	330 W x 480 L x 260 H



ROLLER SHOPPING BASKETS 43L

BB-BAR55

Roller baskets are lightweight, easy to manoeuvre and encourage customers to purchase more as they are less restricted by weight. They include an adjustable pull-up handle to wheel the basket and a standard handle to carry the basket. Large 50mm wheels allow for effortless mobility, even when full. Stackable for convenient storage.

☐ Black
 ☐ Red
 ☐ Blue

Pack Qty	1
Size (mm)	380 W x 530 L x 442 H



SMALL 3 BASKET TROLLEY

BB-BATR3

The small shopping basket trolley is perfect for smaller aisles such as those in convenience stores, petrol stations, newsagencies or other specialty stores. This economic trolley allows stores to utilise their current baskets by simply attaching them (baskets sold separately). Carry one, two or three baskets at once!

☐ Chrome

Pack Qty	1
Size (mm)	430 W x 650 L x 900 H



LARGE SHOPPING TROLLEY

BCF-TR-S-165L

The most effective method of encouraging larger purchase quantities and a higher spend is the availability of shopping trolleys. Our 165 litre capacity trolleys feature a child seat with approved safety seat belt.

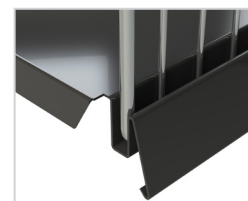
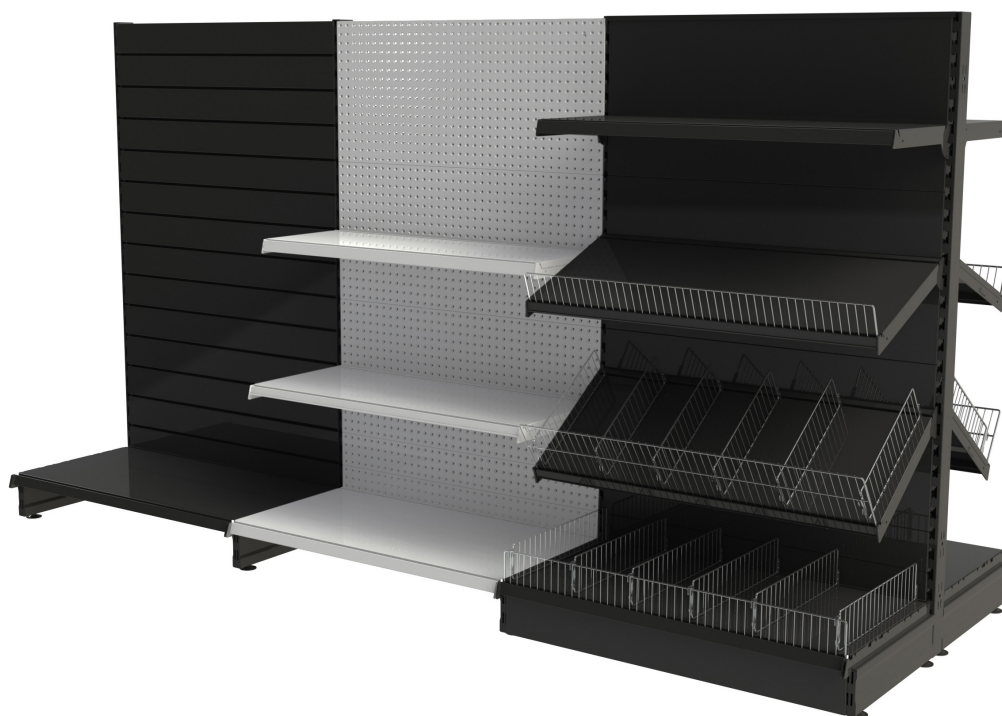
☐ Chrome

Pack Qty	1
Size (mm)	545 W x 1000 L x 1010 H



VERSA GONDOLAS

The most versatile shelving system in the market!
Ideal for large or heavy merchandise.

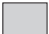



KEY FEATURES

- Made from **premium grade steel**.
- Powder coated light grey or black.
- Designed and produced to only the highest **European standards**.
- Available with your choice of three backings/rear panels - volcano board, slatwall or flat metal.
- Unique volcano board design to withstand heavy load deflection from pegboard hooks.
- **Feet are supplied separate to uprights** (achieving savings in freight).
- Thicker **0.8mm shelves** to support heavier merchandise.
- **Versatile shelf** with angled edge for better data strip visibility. Shelf **accommodates wire fences and front risers**, perfect when positioning shelves on various angles.
- Kits are available with your choice of height, width, backing panels and base shelf depth. Add brackets and heavy duty shelves separately.
- Customise your display with a variety of accessories including **top covers, front kick plates, wall brackets, wire baskets or LED lights!**

SPECIFICATIONS



GD-VS

Colours	 Light Grey  Black
Strength	Heavy Duty
Heights (mm)	1500, 1800, 2100, 2400
Widths (mm)	914, 1200
Base Depths (mm)	370, 470
Shelf Depths (mm)	250, 300, 370, 470, 570
Shelf Thickness (mm)	0.8
Rear Panels	Volcano Board, Slatwall, Flat Metal
Components	Starter Bay, Add On Bay, End Bay, End Cap
Configurations	Single Sided, Double Sided



VERSA ACCESSORIES



SHELVES

Colours	 Light Grey  Black
Lengths (mm)	914, 1200
Depths (mm)	250, 300, 370, 470, 570
Thickness (mm)	0.8



GD-V-SF

SHELF BRACKETS

Colours	 Light Grey  Black
Lengths (mm)	250, 300, 370, 470, 570
Tilt Angle	20 degrees or 35 degrees



GD-V-BS

TOP COVERS

Colours	 Light Grey  Black
Lengths (mm)	914, 1200
Width (mm)	60



GD-V-STC

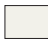
FRONT KICK PLATES

Colours	 Light Grey  Black
Lengths (mm)	914, 1200
Height (mm)	100



GD-V-FM

WIRE BASKET

Colours	 Off White
Size (mm)	1200 L x 450 D



GD-V-WBKIT-1200-450

FRONT WIRE FENCES/DIVIDERS

Colours	 Chrome
Divider Sizes (mm)	370, 470
Fence Widths (mm)	914, 1200
Fence Depths (mm)	95, 170



GD-V-DIV/FNC

L.E.D SHELF LIGHTING

Bring your products to life with LED strip lighting for your shelves. Simple to install and highly effective, LEDs allow a consistent flow of light over your products enabling them to look cleaner, brighter and more attractive to the consumer. LEDs can also be used to illuminate and highlight branding.



KEY FEATURES

- Choose from a stacked shelf light kit or horizontal daisy-chain kit depending on your store layout and lighting preferences.
- Efficiencies in operational costs.
- High intensity cool white light allows your products to stand out.
- Complete plug & play solution.
- Can be installed quickly and easily without any electricians.
- Magnetic components for a simple application onto any metal shelf or gondola.
- Life span of up to 30,000 hours.

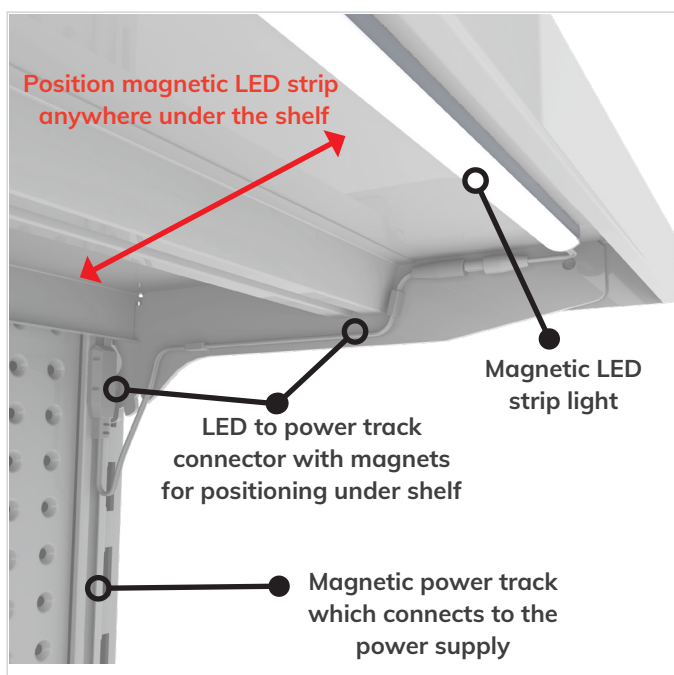
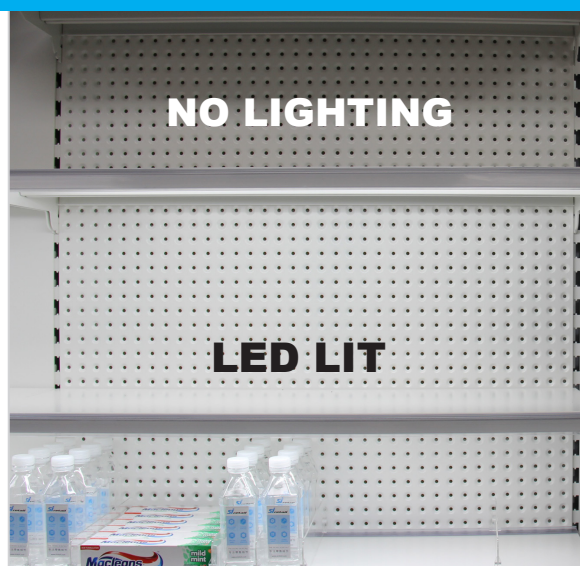
STACKED L.E.D SHELF LIGHT KIT

Purchase an easy to assemble vertical kit and then add extra LED strip lights to light up all of your shelves! Kits are available depending on shelf configuration (1 x LED strip per shelf) and come complete with magnets to secure the LED strip and power track to your shelf.

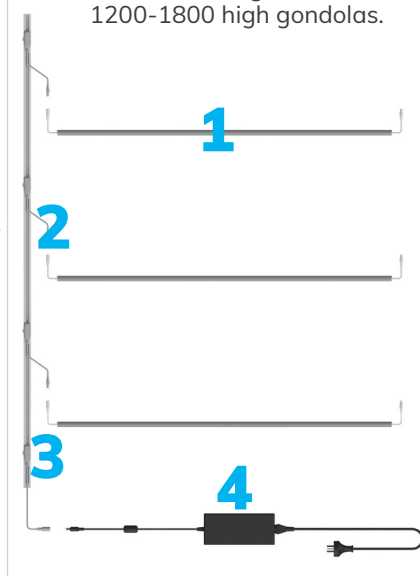
☐ White ☒ Black

Wattage (914mm Length)	10W
Wattage (1200mm Length)	12W
Brightness	6000K Cool White
Voltage	24V
Suits Shelf Lengths (mm)	914, 1200
Suits Gondola Heights (mm)	1200-1800 & 1900-2400

LED-F



Example of a vertical led kit with a 3 shelf configuration for 1200-1800 high gondolas.



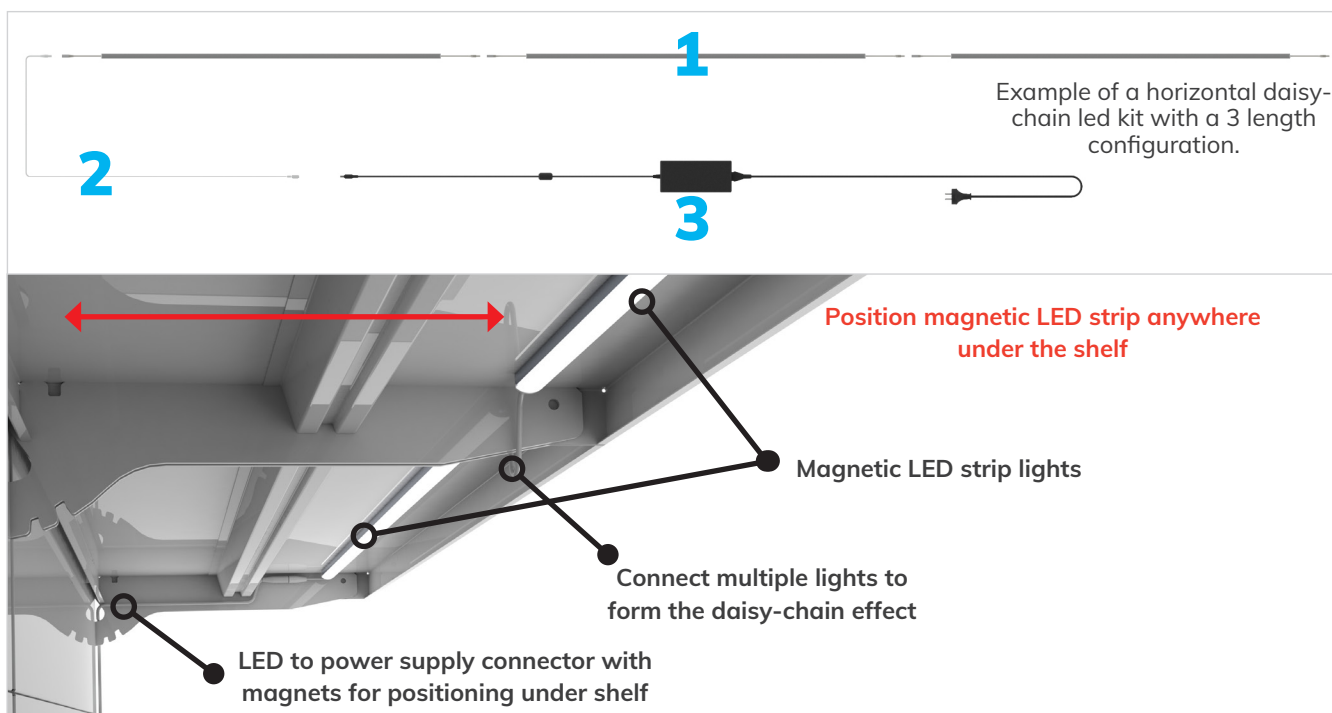
HORIZONTAL L.E.D DAISY-CHAIN KIT

LED-DC

Daisy chain LED kits are used for lighting a horizontal strip along gondolas whereby the power track is bypassed and instead, a direct link to the power supply is utilised. No power tracks or power track to LED connectors are required for a daisy-chain horizontal set up. LEDs connect to each other creating a 'chain' of LED light across your store.

☐ White ☒ Black

Wattage (914mm Length)	10W	
Wattage (1200mm Length)	12W	
Brightness	6000K Cool White	
Voltage	24V	
Suits Shelf Lengths (mm)	914	1200
Max LEDs Per Power Supply	12	10



PACK CONTENTS

VERTICAL LED SHELF LIGHT KIT INCLUDES:

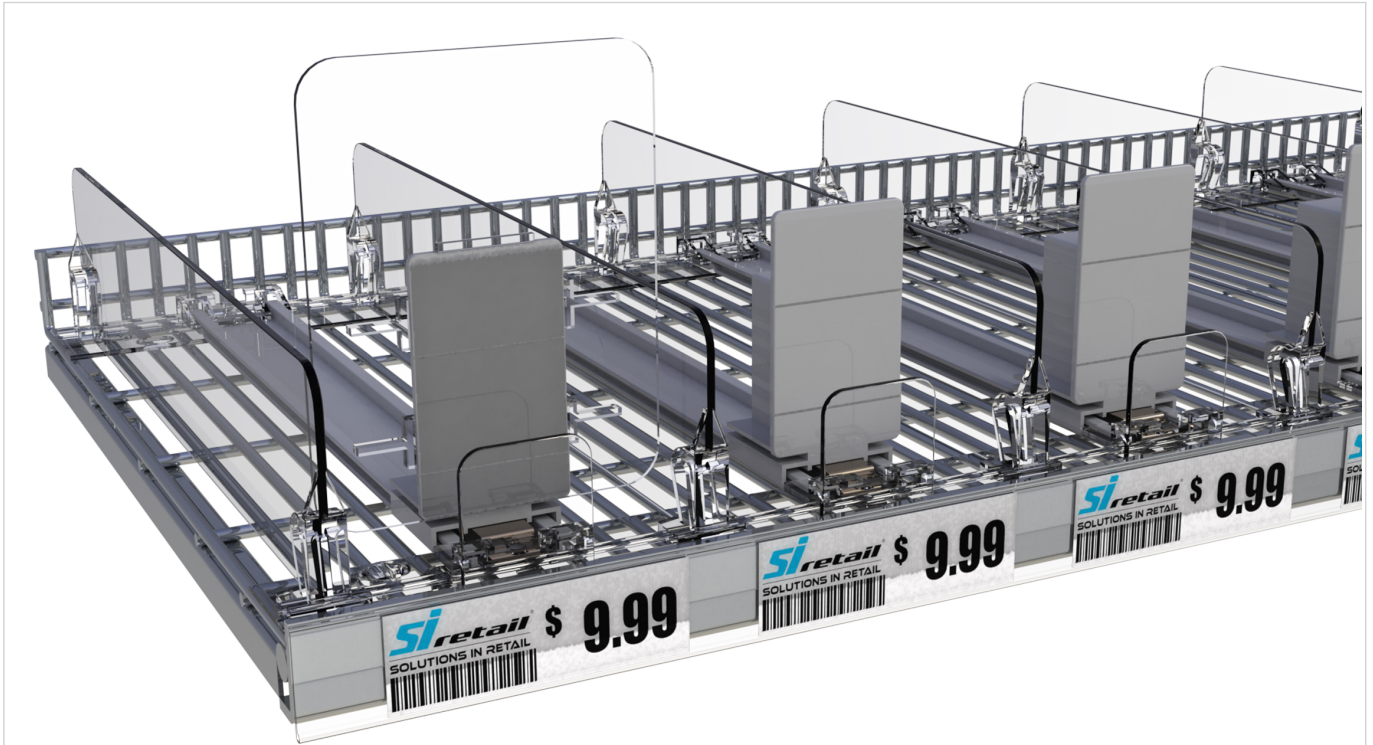
1. Flat LED strip lights (one LED strip per shelf)
2. LED to power track connectors (one per LED)
3. Power track
4. Power supply

HORIZONTAL LED DAISY-CHAIN KIT INCLUDES:

1. Flat LED strip lights (one LED strip per length)
2. LED to power supply connector
3. Power supply

SHELF MANAGEMENT

SI Retail's shelf dividers are designed for the ever changing in-store environment to allow for quick merchandising and a seamless product presentation. Pushers and Dividers are great tools for helping to reduce staffing costs related to shelf maintenance and enhance your customers shopping experience by making it even more convenient to browse.



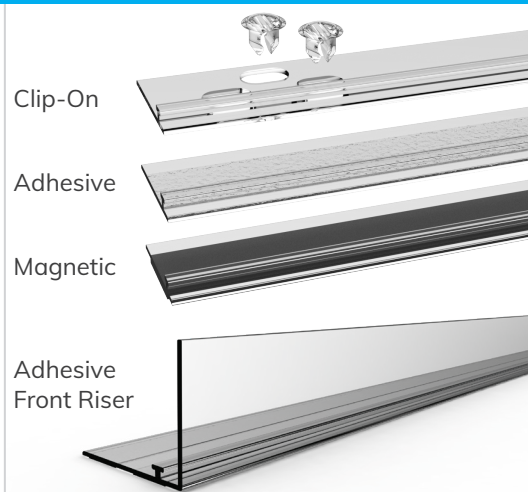
T-RAILS & RISERS

T-Rails sit on the front and back of shelves for the dividers and pushers to clip onto. They hold the dividers in place and are available in a clip-on version for wire shelves, adhesive version for most applications or a magnetic version for metal gondolas. Adhesive T-Rails with front risers are commonly used with pushers.

 Clear

Pack Qty	10
Lengths (mm)	900, 914, 1200

SMS-RT & SMS-RL



DIVIDERS

Dividers are used to separate different products on your shelves for a neat and consistent display. They are available in either a 60mm height or 120mm height and are made to a number of different lengths to suit all shelving sizes. T-Rails are sold separately and are placed along the front and back of the shelf for the dividers to clip into.

 Clear

Pack Qty	40
Divider Heights (mm)	60, 120
60mm Divider Lengths (mm)	185, 260, 285, 335, 385, 435, 485
120mm Divider Lengths (mm)	335, 385, 435, 485

SMS-DS



PUSHERS

Pushers, Pusher Back Plates & Front Risers are commonly used with shelf dividers as a full shelf management system. The 30mm wide pusher connects to the T-Rail (between two shelf dividers) to ensure your products are always placed at the front of the shelf even when a customer takes an item. Pusher back plates can be added for larger items which need a taller pusher.

  Combination of Grey & Clear

Pack Qty	10
Pusher Lengths (mm)	285, 335, 385, 435, 485
Pusher Back Plate (mm)	90 W x 115 H

SMS-P & SMS-PBS



GRAVITY ROLLER SHELVES

The newest product gaining popularity within the FMCG retail environment is Gravity Roller Shelves. This unique system is used as a gravity feed shelving solution which improves visibility of product and allows for easy re-merchandising. The result is no more empty facings, which equates to more sales!



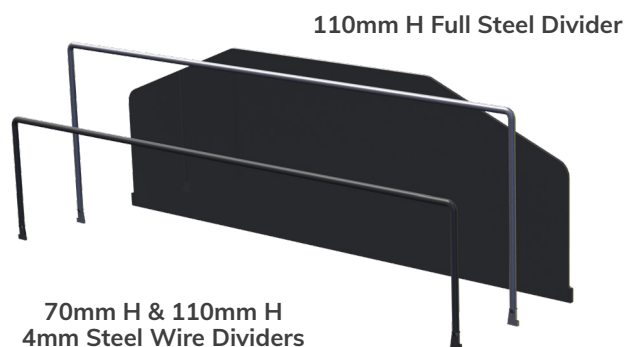
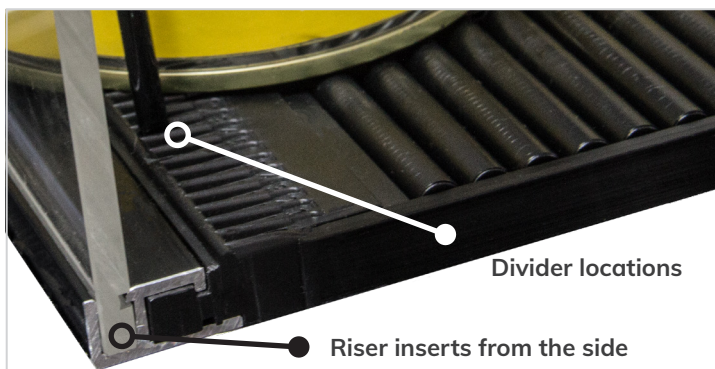
So easy to use, Gravity Roller Shelves are simply placed on the top of current store shelves, loaded with product and segmented with dividers. With special integrated rollers and gravity on your side, product will always smoothly glide to the front of the shelf, where an acrylic front riser stops the product falling forward and off the shelf.

The benefits of using clear 100mm high front risers fed into the roller track from the sides means that the riser will not fall out and break unlike similar gravity fed systems used in the market which utilise a drop-in style of front riser.

Dividers are easy to move and align along numbered perforated front and back rails, allowing perfectly straight displays and simple planogram resets. Choose from simple steel wire dividers (70mm or 110mm) for most everyday products or try the full steel style of dividers which stand 110mm in height, perfect for large and heavy items.

Stock replenishment has never been easier! Whether restocking from the rear or the front of the shelf, the special self-cleaning rollers used in this system allows stock to glide easily, therefore the restocking process is shortened, resulting in a more efficient store operation. Labour savings are achieved through less time spent correcting product displays. The mesh base of this system allows cool air to travel up and around the product, intelligently designed for use in refrigerated or cooler room displays.



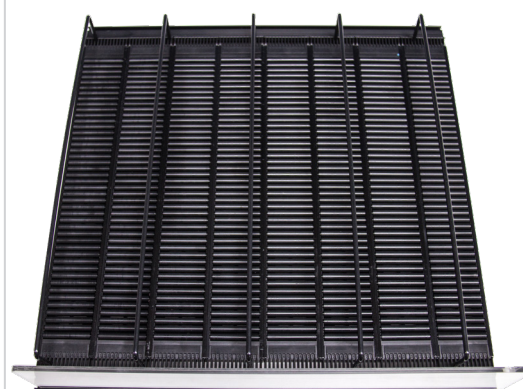


KEY FEATURES

- Quick and easy to install.
- Low maintenance resulting in **reduced labour costs**.
- Improves **product presentation** and ensures products are **always front facing**.
- Durable and long lasting.
- Versatile and adjustable dividers to support **heavier products**. Choose from steel wire or full steel dividers.
- **Improved stock rotation**, perfect for back fed refrigerated merchandising.
- Boosts category sales by offering a **consistent display of stock**.

GRAVITY ROLLER SHELVES

Colour of System	Black
Colour of Dividers	<div style="display: flex; align-items: center;"> <div style="width: 15px; height: 15px; background-color: black; margin-right: 5px;"></div> Steel Powder Coated Black, <div style="width: 15px; height: 15px; background-color: lightgray; margin-left: 10px; margin-right: 5px;"></div> Stainless Steel </div>
Width per Unit (mm)	Increments of 50
Depth of Unit (mm)	Manufactured to suit your shelves
Height of Dividers (mm)	70, 110
Divider Material	4mm Steel Wire (Powder Coated or Stainless), Full Steel (Powder Coated)
Front Riser Material	Acrylic
Front Riser Size (mm)	100 H x 5 Thick



PALLET GUARD

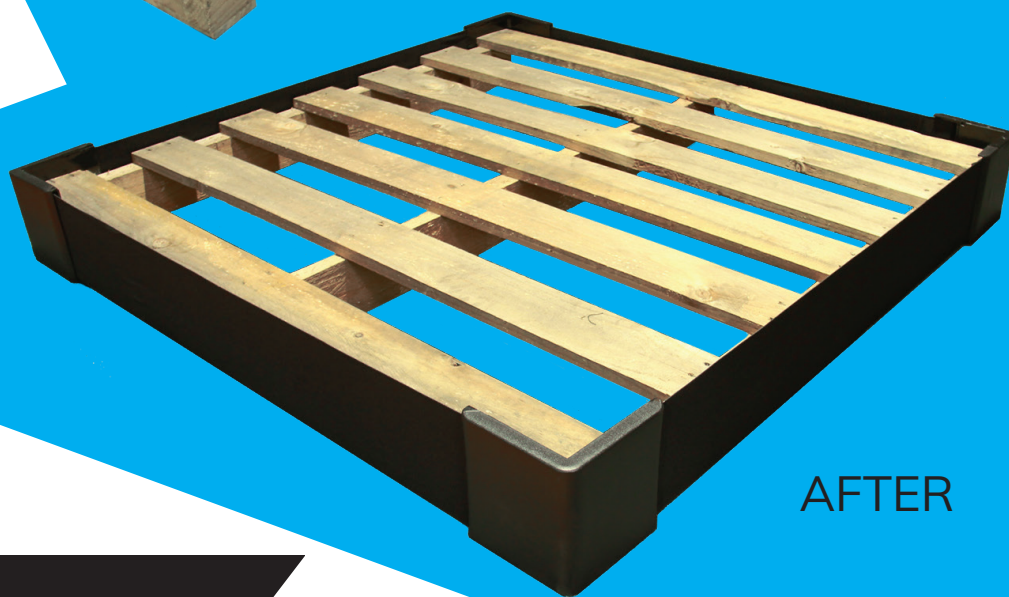
A simple method for concealing the base of existing pallets to make it more attractive and help draw attention to products. Pallet guards also have the added safety benefit of ensuring the corners of pallets are fully covered, protecting customers from any sharp edges. All wooden edges are completely hidden, resulting in a visually appealing display.

Compact Packaging!
Each Pallet Guard weighs just
2kg and is packed in a small box
225 L x 195 W x 190mm H





BEFORE




AFTER

KEY FEATURES

- **Adjustable** to fit most common 'half' and 'full' size pallets.
- All components are **pre-assembled** meaning an easy, **one-person installation**.
- More **durable** than paper or corrugated wraps.
- More **versatile** than poly-printed base wraps because it is **re-usable**!
- Add custom promotional sign panels to your pallet guard by inserting printed corflute.

ADJUSTABLE PALLET GUARD

FD-PG-BK

Colour	 Black
Height of Unit (mm)	165 (corners), 150 (elastic sides)
Length of Elastic (mm)	Adjustable perimeter from 3600 to 5000
Box Contents	3 x Slide Through Corners, 1 x End Corner, 1 x Elastic Strap, 1 x Installation Instructions

